

Cynulliad Cenedlaethol Cymru | National Assembly for Wales

Pwyllgor Plant, Pobl Ifanc ac Addysg | Children, Young People and Education Committee

Ymchwiliad i Gynlluniau Strategol Cymraeg mewn Addysg | Inquiry into Welsh in Education Strategic Plans

WESP 33

Ymateb gan : Ymgyrch TAG

Response from : Ymgyrch TAG

Ers Haf 2013 rydym wedi bod yn ymgyrchu dros ysgol gynradd Gymraeg i ardaloedd Grangetown a Threbiwt yng Nghaerdydd. Dyma un o ardaloedd tlotaf a mwyaf amrywiol Cymru o safbwynt grwpiau ethnig, ac felly'n flaenoriaeth benodol o safbwynt ehangu addysg Gymraeg – yn ôl strategaeth Addysg Gymraeg y Cynulliad (wele bwynt 3.6 – cyfle cyfartal). Mewn ffaith, o ystyried bod yr ardal ar aelwyd y Senedd mae'n eironi bod nifer o blant yr ardal yn gorfod teithio trwy ddwy ward er mwyn cyrraedd eu hysgol Cymraeg agosaf.

Mae ein profiad fel ymgyrch, yn debyg i sawl un arall mae'n siŵr, wedi bod yn un rhwystredig ac anodd tu hwnt. Ar brydiau mae'n teimlo ein bod ni wedi bod yn ymgyrchu dros agor *incinerator* neu waith trin carthion yn yr ardal, nid ysgol – a hynny er gwaetha'r ffaith bod yr ysgol arfaethedig yn un sydd fod cael ei hariannu o dan y prosiect Ysgolion yr Unfed Ganrif ar Hugain. Bwriad gwreiddiol a chwbl annerbyniol y Cyngor yn haf 2013 oedd defnyddio'r cyllid yma i ymestyn ysgol arall mewn ward cyfagos, ond fe orfodwyd iddynt gymryd tro pedal yn sgil cyfarfod gyda Phwyllgor Craffu Plant a Phobl Ifanc Cyngor Caerdydd. Wedi cyfnod pellach o ymgyrchu brwd cafwyd addewid gan yr Aelod Seneddol lleol o ysgol newydd yn agor ym Medi 2015, ac erbyn y flwyddyn newydd yn 2014, daeth yn hysbys bod yr ysgol bellach yn rhan o WESP Cyngor Caerdydd.

Buasem yn hoffi adrodd bod hyn wedi newid y sefyllfa'n sylfaenol. Gwaetha'r modd mae ein profiad dros y flwyddyn a hanner ers hynny yn awgrymu nad ydy'r ffaith ein bod ni bellach yn gallu hawlio fod gan y Cyngor 'dyletswydd statudol' i sicrhau codi'r ysgol yn newid pethau'n ymarferol inni – ac mae'n ymddangos yr un mor hawdd i'r Cyngor codi rhwystrau a meini tramgwydd.

Hynny yw, os yw'r Cyngor yn gallu darganfod rhesymau ymarferol, honedig, dros oedi neu danseilio'r cynlluniau, yna nid yw'r ffaith bod yr ysgol honno yn y WESP yn mennu dim ar y sefyllfa. Pan ddaeth y ddogfen ymgynghorol ar yr ysgol i law erbyn Mawrth 2014 roedd yn amlwg bod y cynllun a arweiniodd at addewid yr AS wedi'i roi i'r neilltu heb unrhyw esboniad teilwng. Roedd y cynllun a gafwyd i gyfuno'r ysgol gyda'r Ganolfan Hamdden leol yn drychinebus o safbwynt dwyn perswâd ar y boblogaeth leol, yn arbennig yn sgil ymdrechion y Cynghorwyr lleol – a oedd yn rhan o'r Cabinet a gyflwynodd y cynlluniau – i godi bwganod ac yn benodol awgrymu y byddai bwriad gan siaradwyr Cymraeg i gyfyngu argaeledd yr adnoddau (wele'r daflen atodol – 'There is great pressure from Welsh speaker...').

Dengys y potensial felly i rheini sydd yn wrthwynebus i ehangu addysg Gymraeg llethu cynlluniau heb unrhyw ystyriaeth o ddyletswyddau statudol. Yr hyn a newidiodd natur y sefyllfa, a rhoddodd gobaith inni o lwyddiant, oedd nid y cymal yn y WESP, ond yn hytrach dyfodiad arweinydd newydd i Gyngor Caerdydd a oedd yn frwd dros yr Iaith Gymraeg. Yn sgil hyn cafwyd perthynas agosach gyda'r aelod dros addysg a sefydlwyd deialog o fath. Yn anochel roedd y cynlluniau gwreiddiol yn aflwyddiannus oherwydd y corddi dyfroedd, ac ym mis Medi 2014 fe aeth y Cyngor yn ôl unwaith eto i'r bwrdd cynllunio – dan yr arweinyddiaeth newydd. Ym mis Ionawr 2015 cyflwynwyd cynnig ymarferol, a llawer llai dadleuol, gyda'r addewid o ymgynghoriad statudol. Yn anffodus roedd oedi oherwydd yr etholiad ac fe alwyd cyfnod Purdah ar y cynlluniau. Ni fydd yr ymgynghoriad yn digwydd nawr tan fis Medi, ond rydym wedi derbyn addewid ysgrifenedig na fydd hyn yn tanseilio'r bwriad o agor yr Ysgol ym Mid Medi 2017. Yn y cyfamser mae dosbarth derbyn wedi'i sefydlu yn y ward – i ddechrau Medi 2015 – ac fe fydd y plant yn trosglwyddo o'r fan honno i'r ysgol newydd.

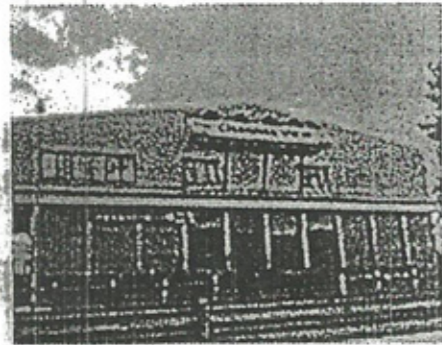
Y gwirionedd yw ein bod ni'n parhau i deimlo'n obeithiol, ond anesmwyth, oherwydd ein profiad ni hyd yma. Roedd y bleidlais dros arweinyddiaeth y Blaid Lafur yng Nghaerdydd ym mis Mai eleni yn achos pryder o'r mwyaf inni oherwydd y shifft wleidyddol posib. Yn hynny o beth mae'n ymddangos inni mai ewyllys gwleidyddol Cabinet y Cyngor ac nid y ddyletswydd statudol sydd yn effeithiol o safbwynt symud y broses cynllunio ymlaen. Pe bai'r hinsawdd wleidyddol yn newid yn ein herbyn, nid yw'n hysbys inni sut fyddai cyfeirio at y WESP yn rhoi unrhyw rym inni o safbwynt protestio yn erbyn y

meini tramgwydd ymarferol, honedig, y byddai modd i'r Cyngor creu. I grynhoi, nid yw'r WESP fel rydym ni yn ei deall hi yn help ymarferol o safbwynt mynd i'r afael â Chyngor nad sydd a'r ewyllys i wireddu ei chynnwys. Iddi gyflawni'r rôl yma mae angen iddi alluogi camau cadarnhaol ar ran ymgyrchwyr a rheini – megis y gallu i fynnu arolwg trylwyr o'r sefyllfa gan y Comisiynydd Iaith neu Swyddfa'r Gweinidog Addysg. Lle nad oes mecanwaith i weinyddu'r ddyletswydd, ar y gorau norm cymhellol ydyw, nad oes rheidrwydd i'w weithredu.

Cardiff County Council is consulting on Primary School provision in Grangetown and Butetown and you may have received a consultation document through your door giving you information on the sites being considered, dates for consultation meetings and a feedback form.

One of the sites which has been identified for a new school in Grangetown is the **Channel View Leisure Centre and Adventure Play sites.**

We are a group of concerned residents who are working with our local Councillors to get the best outcome for Grangetown and we have genuine concerns about the proposals for the Channel View Site.



We are concerned that the document does not provide sufficient information for anyone who may not be able to attend one of the consultation meeting to be able to provide feedback.

The proposal is for a 2 form of entry primary school. A 2 form of entry school would serve between 400 and 500 hundred children. The new school if approved would include some leisure service for the community but only outside of school hours.

- We currently have a leisure provision which is available both day and evenings and is available to the whole community
- We don't believe this proposal could be achieved without taking away more of the Marl playing fields
- Jim Driscoll Way is too short and narrow to take all of the traffic generated by over 400 parents dropping off and picking up their children plus up to 100 staff
- The school would be located very near to the waterside and believe this would be a health and safety issue in that there could be children who are unsupervised with access to deep water
- There is great pressure from Welsh speaker to have play in Welsh and would therefore be concerned that the facility, if built, would not always be available to the whole community
- There would be increased traffic on an already busy Avondale/Ferry Road including increased parking problems on these and surrounding streets

We recognise the need for Welsh Medium in the area but just don't believe Channel View is the right site.

In relation to the expansion of Grangetown Primary and Ninian Park we accept that the schools need to expand but want to ensure that in all cases the area of parkland available to the public is not decreased.

**The consultation dates and venues are as follows:**

**Monday 2<sup>nd</sup> June Channel View Leisure Centre 6.30 to 8.30pm (public meeting)**

Tuesday 3<sup>rd</sup> June Butetown Community Centre 11.00am to 1pm (drop in session)

Thursday 5<sup>th</sup> June Canton Community Hall 6.30 to 8.30 (public meeting)

Monday 9<sup>th</sup> June the Hub Loudoun Square 12.00 to 2.00 (drop in session)

Tuesday 10<sup>th</sup> June Canton Community Hall 12.00 2.00 (drop in session)

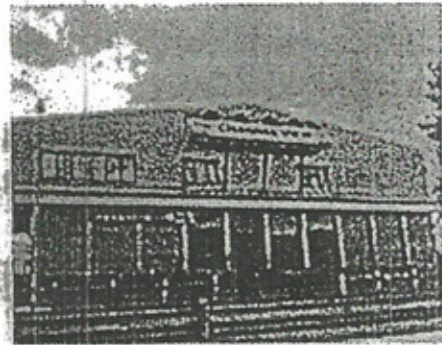
**Wednesday 11<sup>th</sup> June Channel View Leisure Centre 12.00 to 2.00 (drop in session)**

***We will be attending the public meeting on Monday 2<sup>nd</sup> of June if you share our concerns please join us.***

Cardiff County Council is consulting on Primary School provision in Grangetown and Butetown and you may have received a consultation document through your door giving you information on the sites being considered, dates for consultation meetings and a feedback form.

One of the sites which has been identified for a new school in Grangetown is the **Channel View Leisure Centre and Adventure Play sites.**

We are a group of concerned residents who are working with our local Councillors to get the best outcome for Grangetown and we have genuine concerns about the proposals for the Channel View Site.



We are concerned that the document does not provide sufficient information for anyone who may not be able to attend one of the consultation meeting to be able to provide feedback.

The proposal is for a 2 form of entry primary school. A 2 form of entry school would serve between 400 and 500 hundred children. The new school if approved would include some leisure service for the community but only outside of school hours.

- We currently have a leisure provision which is available both day and evenings and is available to the whole community
- We don't believe this proposal could be achieved without taking away more of the Marl playing fields
- Jim Driscoll Way is too short and narrow to take all of the traffic generated by over 400 parents dropping off and picking up their children plus up to 100 staff
- The school would be located very near to the waterside and believe this would be a health and safety issue in that there could be children who are unsupervised with access to deep water
- There is great pressure from Welsh speaker to have play in Welsh and would therefore be concerned that the facility, if built, would not always be available to the whole community
- There would be increased traffic on an already busy Avondale/Ferry Road including increased parking problems on these and surrounding streets

We recognise the need for Welsh Medium in the area but just don't believe Channel View is the right site.

In relation to the expansion of Grangetown Primary and Ninian Park we accept that the schools need to expand but want to ensure that in all cases the area of parkland available to the public is not decreased.

**The consultation dates and venues are as follows:**

**Monday 2<sup>nd</sup> June Channel View Leisure Centre 6.30 to 8.30pm (public meeting)**

Tuesday 3<sup>rd</sup> June Butetown Community Centre 11.00am to 1pm (drop in session)

Thursday 5<sup>th</sup> June Canton Community Hall 6.30 to 8.30 (public meeting)

Monday 9<sup>th</sup> June the Hub Loudoun Square 12.00 to 2.00 (drop in session)

Tuesday 10<sup>th</sup> June Canton Community Hall 12.00 2.00 (drop in session)

**Wednesday 11<sup>th</sup> June Channel View Leisure Centre 12.00 to 2.00 (drop in session)**

***We will be attending the public meeting on Monday 2<sup>nd</sup> of June if you share our concerns please join us.***